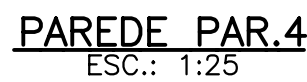
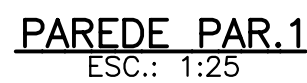



QUADRO DE AÇOS				
N	Ø	Q	COMPRIMENTOS	
			UNIT.m	TOT.m
1	8,0	6	171	10
2	8,0	14	256	36
3	8,0	6	181	11
4	8,0	14	266	37
5	10	14	VAR.	14
6	12,5	4	182	7
7	10	6	206	12
8	10	8	VAR.	7
9	10	6	216	13
10	12,5	4	192	8
11	10	7	VAR.	10
12	8,0	7	VAR.	7
13	10	16	182	29
14	8,0	48	266	128
15	8,0	36	111	40
16	8,0	36	113	41
17	8,0	84	193	162
18	10	12	217	26
19	8,0	6	254	15
20	8,0	4	170	7
21	8,0	4	180	7
22	10	16	192	31
23	8,0	48	276	132
24	8,0	8	67	5
25	10	2	306	6
26	8,0	4	154	6
27	10	4	262	10
28	6,3	7	60	4

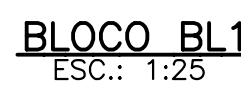


RESUMO DE AÇO		
Ø	COMP. m	PESO kg
6,3	4	1
8,0	644	254
10	158	97
12,5	15	14
TOTAL		366

TIPO DE ARMAÇÃO	BITOLA	DIÂMETRO DO PINO DE DOBRAMENTO (cm)
ESTRIBOS	5	1,5
	6,3	1,9
	5	3,0
	6,3	3,2
	8,0	4,0
	10	5,0
	12,5	6,3



* MEDIDAS FORNECIDAS NESTE DESENHO EXCETO INDICAÇÃO CONTRÁRIA

[illegible]